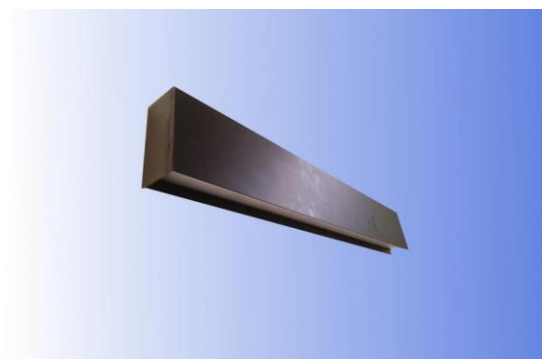


LINEA LED



Key advantages

- The luminaire is made from extruded aluminium
- available in black and in white colour.
- Luminaire efficacy of more than 130lm/W
- IP 40

Application

Applicable at areas that need a wall-washer, corridors, hallways.

Mounting

This luminaire is produced for wall mounting.

Warranty

The operational life of the LED modules used is minimum 50,000 h. The warranty of the luminaire is 5 years.

Technical Specifications*

*All specifications are for Philips components

PRODUCT REVIEW

Technology	LED
Dimmable	No
Type	Integrated LED
Mount	Wall mounted
Control gear type	Electronic
Housing material	Steel
Lumen maintenance L70/B50	>70 000
Lumen maintenance L80/B10	>60 000
Photo biological Risk Group	0
Luminaire efficacy (lm/W)	157
SDCM	3
Fixture Luminous Flux	4400
Glare control	UGR < 19
Color temperature (K)	4000
IP	40
IK	07

GENERAL DATA

Ordering №	1410050510310301020400001
Product name	Linea LED
General applications	Corridors, hallways
Sales pack quantity	1
Operating temperature range (°C)	25
Housing color	White RAL 9016

ELECTRICAL DATA

Luminaire Input Power (W)	28
Inrush duration (µs)	230
Inrush current (A)	15,1
Drive current (mA)	276
Max luminaires per 10A C Breaker	34
Max luminaires per 13A C breaker	44
Max luminaires per 16A C Breaker	56
Max luminaires per 20A C breaker	68
Max luminaires per 10A B breaker	20
Max luminaires per 13A B breaker	26
Max luminaires per 16A B breaker	100% ≤ 33
Max luminaires per 20A B breaker	41
CRI	>80
Electrical protection	Class I
Glow wire test (°C)	850
Lamp energy label (class)	A++
Nominal input voltage	220...240
Nominal frequency (Hz)	50...60

PHYSICAL DATA

Lamp included	Yes
---------------	-----



Included lamp	Integrated LED
Nominal product height (mm)	90
Nominal product width (mm)	40
Nominal product length (mm)	600
Weight (kg)	
Diffuser finish	Opal
Diffuser material	PMMA

PACKAGING

Single packaging type	Carton
Packaging outer length (cm)	60.5
Packaging outer width (cm)	4.5
Packaging outer height (cm)	9.5
Single package volume (dm3)	2.59
Single product gross weight (kg)	
Single packaging weight (kg)	0,2

PHOTOMETRY

TECHNICAL DRAWINGS

